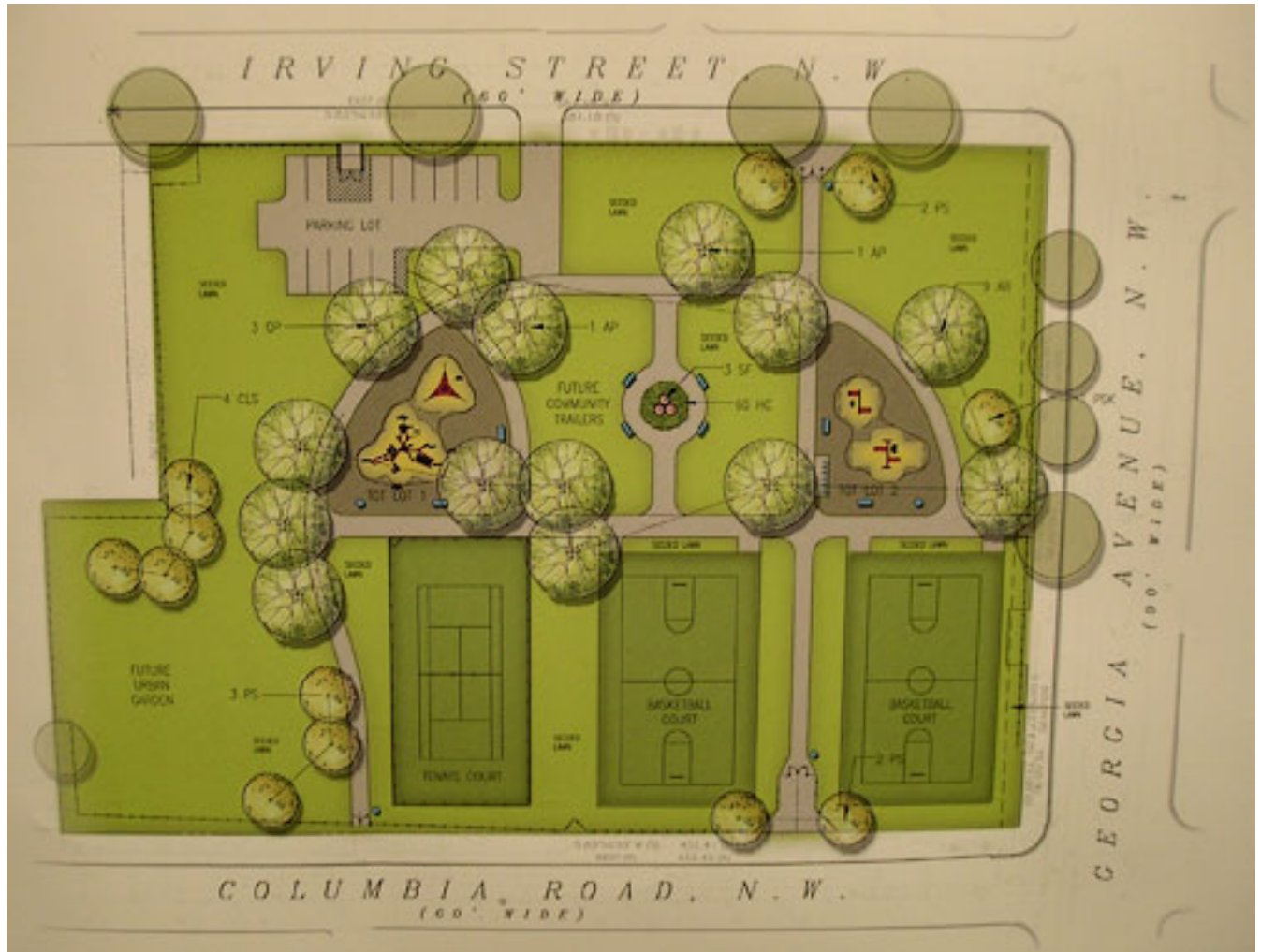


Bruce Monroe Park

In 2008, the District closed the Bruce-Monroe Elementary School with plans to demolish the school and solicit developers to build new mixed-use buildings and a new school. Unfortunately, no developers were interested, and DMPED started planning a parking lot by default.

Neighbors organized against the lot, and successfully persuaded the DC government to drop the parking lot plan. DMPED and the Office of Planning presented a set of ideas for temporary urbanism instead, eventually resulting in the site plan below, which once completed in 2011 has been operated by DPR:



Improvements in the plan included: 2 basketball courts, 1 tennis court, parking spaces (required by zoning regulations), playground areas, perimeter fencing and a bio-retention area as required by DDOE. An area was reserved for a future urban garden, which was established in 2011 and summarized below.

Bruce Monroe Community Garden

Bruce Monroe Community Garden was established in 2011 through an initial \$10,000 appropriation from DC government as part of the development of Bruce Monroe Park. The garden was organized by Ecolocity, a local nonprofit organization. A series of community meetings were held to gather ideas for the garden, identify community gardeners, and create a design for the garden. The design was approved by DPR and in June 2011, Phase One of the garden officially opened.

In 2012, Ecolocity and Keep Washington, DC Beautiful jointly applied for a Keep America Beautiful Fund/Lowe's grant. This \$20,000 grant allowed the garden to complete the construction of all raised beds in the design.

Recent Upgrades by DPR/DGS

In July of 2014, DPR/DGS installed a 40' shade structure, new benches, and 2 new water fountains.

Bio-retention Area

The fenced bio-retention area has become a makeshift dog park. The bio-retention area was fenced to keep foot traffic out of the area. This is important as foot traffic (by both humans and dogs) degrades the function of bio-retention areas by compacting the layers of soil that serves to absorb storm-water, eventually leading to erosion issues and reduced function of the bio-retention area. Further, dog waste (especially urine that can't be picked up) is harmful to the required plantings in this type of bio-retention area.

Dog Parks Located Nearby

There are currently 5 Official DPR Dog Parks located less than 2 miles from Bruce Monroe Park.

1. LeDroit Dog Park is located 1.0 mile away and is located at 286 V Street, NW.
2. Shaw Dog Park is located 1.3 miles away and is located at 1673 11th Street, NW.
3. Walter Pierce Dog Park is located 1.5 miles away and is located at 2630 Adams Mill Rd, NW.
4. Upshur Dog Park is located 1.6 miles away and is located at 4300 Arkansas Ave, NW.
5. S Street Dog Park is located 1.7 miles away and is located at 17th & S Street, NW.

Additionally, we are in the planning stages for two new community centers where the community has expressed interest in establishing a dog park:

1. Edgewood Recreation Center and Park located 3rd and Evarts Street, NE, which is 1.7 miles away; scheduled for construction in 2017.
2. New McMillan Park Community Center will be located less than a mile away; scheduled for construction in 2017.

Dog Park Rules/Regulations (DC Register Volume 54 – No. 49)

- 731.2 No person shall establish a dog park or charge a fee for use of a dog park *without prior approval* from the Department of Parks and Recreation. *DPR HAS NO RECORD OF APPROVAL FOR A DOG PARK AT BRUCE MONROE PARK.*
- 733.2 (d) A dog park shall have a surface type that allows for positive drainage away from the site and that helps mitigate waste management issues. *THE AREA BEING USED IS ACTUALLY LOCATED WITHIN A DRAINAGE AREA.*
- 733.5 (d) A dog park area shall not be approved for areas upslope from a community garden. *THE COMMUNITY GARDEN IS LOCATED DIRECTLY DOWNSLOPE FROM THE BIORETENTION AREA.*

* There is currently no funding for stand-alone dog parks in the District. Further, DPR is reviewing the dog park application process and is not accepting dog park applications at this time.