

BRUCE MONROE

NOTICE OF BRUCE MONROE SOIL TESTING

As you may know, Bruce Monroe Park is slated for redevelopment. In preparation for the development, on-site Geo-technical survey activities are scheduled to commence Tuesday, November 14, 2017. The Department of General Services, Department of Parks and Recreation and Office of the Deputy Mayor for Planning and Economic Development are coordinating with developers to ensure community disruption is minimized.

FREQUENTLY ASKED QUESTIONS

SCOPE OF WORK

The purpose of a geotechnical survey is to obtain information on the soil and rock underground. Geotechnical crews will be performing soil-boring test to ascertain these site conditions.

DURATION

On-site drilling will begin on Tuesday, November 14, 2017 with completion scheduled for Wednesday, November 22, 2017 weather permitting. Daily work hours, including Saturday, are between 7am and 5pm.

IMPACTED AREA

Drilling will commence in different areas of the park. The impacted areas are shown on the accompanying map. Approximately twenty (20) borings will be done, with four (4) drills each day.

SAFETY

At the start of each day, the subcontractor will cordon off the day's impacted area of the Park with cones and construction tape. The boring holes will be filled-in or patched at the conclusion of each work day. The drill rig will remain on site for the duration of the survey. The rig will be fenced during evening hours.

COMMUNITY GARDEN

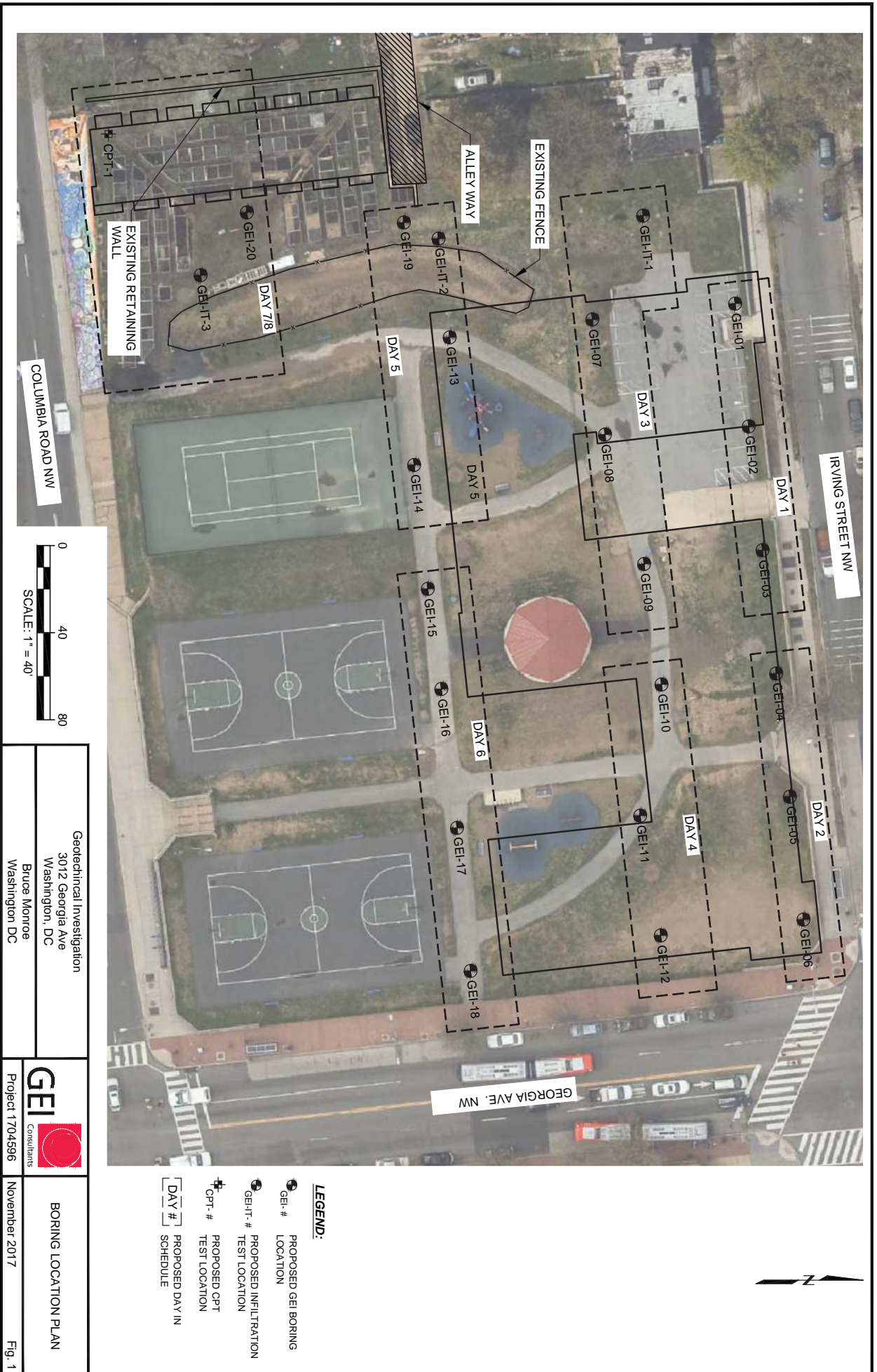
On the last 2 days of the survey, soil tests will occur on three (3) areas within the community garden. No garden plots will be impacted. Portions of the chain link fence will be temporarily removed in order to accommodate the drill rigs. The fence will be returned at the conclusion of the survey.

PARKING

The Geotechnical Crew have been advised this is a residential community and asked to minimize parking in the neighborhood. We have been advised that a maximum of three (3) cars may park in the neighborhood. Contractors have been advised to adhere to posted parking restrictions and failure to do so may result in being issued tickets.

Email: dc.newcommunities@dc.gov





Geotechnical Investigation
 3012 Georgia Ave
 Washington, DC
 Bruce Monroe
 Washington DC



Project 1704586
 November 2017
 BORING LOCATION PLAN
 Fig. 1

- LEGEND:**
- GEI-# PROPOSED GEI BORING LOCATION
 - ⊕ GEI-T-# PROPOSED INFILTRATION TEST LOCATION
 - ⊕ CPT-# PROPOSED CPT TEST LOCATION
 - DAY # PROPOSED DAY IN SCHEDULE

\\wast1v-15011\wast1v-15011\proj\cds\2017\1704586 - Bruce Monroe Project\CAD\Figure 1_Boring Location w-Infiltration Tests Map.dwg - 10/24/2017